

**RD262**

**SPRINTER 2006+,30 SPLINE, REAR**

### PARTS LIST

ITEM #	QTY	DESCRIPTION	PART #	NOTES
01	1	FLANGE CAP KIT	027359SP	
02	1	BONDED SEAL	160702SP	
03	1	CLUTCH GEAR & WAVESPRING KIT	050906SP	
04	1	WAVESPRING	150706SP	
05	1	SPLINED SIDE GEAR	SEE NOTE	2
06	2	SHORT CROSS SHAFT	060403SP	
07	4	PINION GEAR	SEE NOTE	2
08	4	PINION THRUST WASHER	SEE NOTE	3
09	1	SIDE GEAR	SEE NOTE	2
10	2	SIDE GEAR THRUST WASHER	SEE NOTE	3
11	1	DIFFERENTIAL CASE	013059SP	
12	1	COUNTERSUNK SCREW (PK OF 2)	200213SP	
13	1	RETAINING PIN SET (PK OF 4)	120601SP	
14	2	TAPERED ROLLER BEARING	NOT SUPPLIED	
15	1	OE MASTER SHIM	NOT SUPPLIED	
16	1	SEAL HOUSING O-RINGS (PK OF 2)	160248-2	1
17	1	SEAL HOUSING KIT	081832SP	
18	1	SHIM KIT	SHK005	
19	1	LONG CROSS SHAFT	060204SP	
20	1	SPIDER BLOCK	070203SP	
*	1	BULKHEAD FITTING (BANJO TYPE)	170114	
*	1	AIR LINE (6mm DIA X 6m LONG)	170314SP	
*	1	SOLENOID VALVE (12V)	180103	
*	1	SWITCH RR LOCKER	180224	
*	1	CABLE TIE (PK OF 25)	180305	
*	1	OPERATING & SERVICE MANUAL	210200	
*	1	INSTALLATION GUIDE	2102262	

\* *Not illustrated in exploded view*

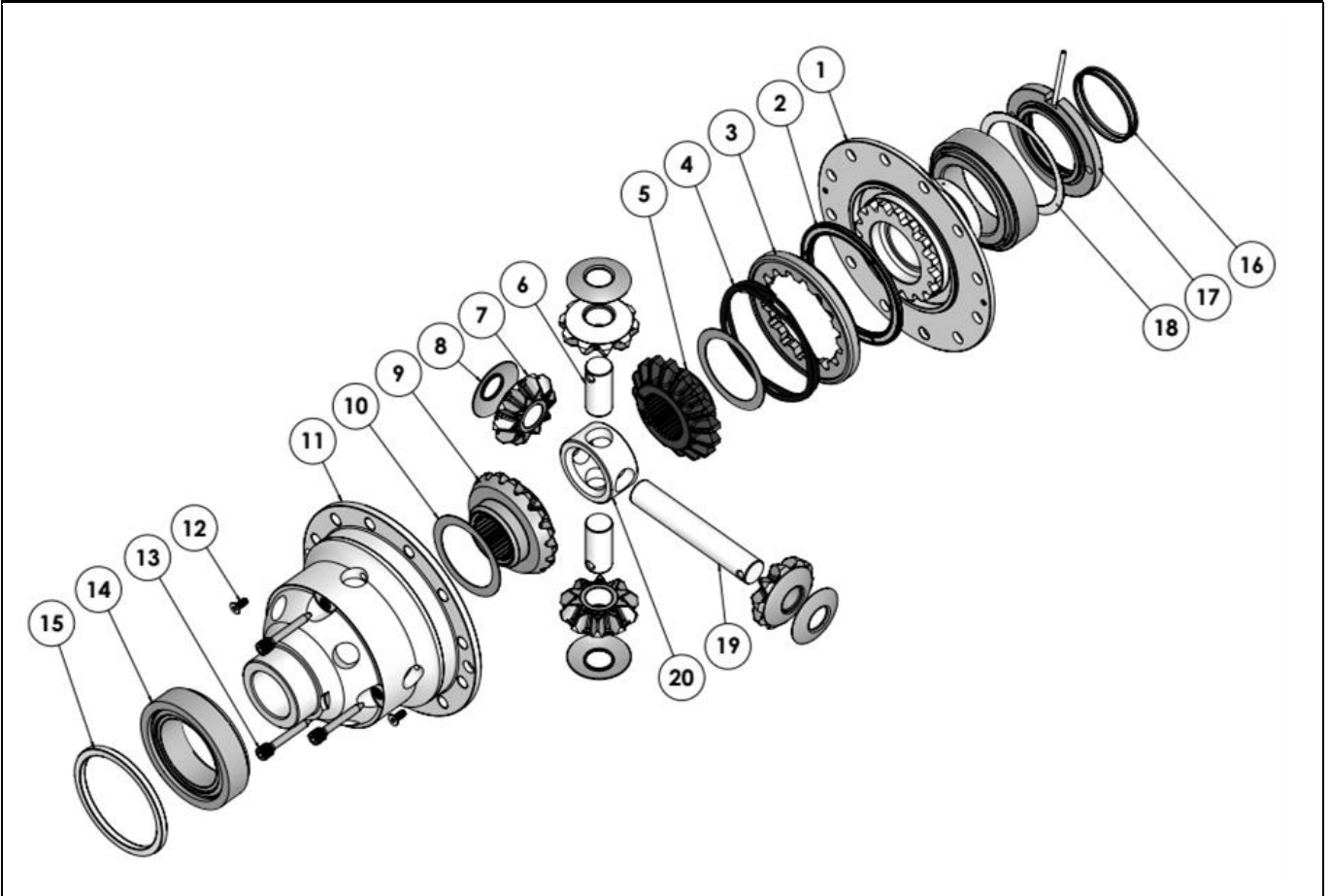
### NOTES

- 1 For replacement O-rings use only BS140 Viton 75
- 2 Available only as complete 6 gear set # 728H361
- 3 Available only as complete thrust washer kit #730H03

**RD262**

SPRINTER 2006+,30 SPLINE, REAR

### EXPLODED DIAGRAM



### SPECIFICATIONS

Axle Spline	30 tooth, Ø39.6mm [1.56"]
Ratio Supported	All
Ring Gear ID	147.0mm [5.79"]
Ring Gear OD	245mm [9.65"]
Ring Gear Bolts Size	10mm
Ring Gear Bolts	12 bolts on Ø162.5mm [6.40"]
Ring Gear Torque	110Nm [81 ft-lb]
Backlash	0.15-0.20mm [0.006-0.008"]
Bearing Cap Torque	81Nm [60 ft-lb]

- Note:** 1. RD262 only suits aftermarket R&P sold by HTV, consult [HTVgear.com](http://HTVgear.com) (International) or [AgileOffRoad.com](http://AgileOffRoad.com) (North America) to assure proper fitment or contact ARB for more info.
2. A crush sleeve (equivalent Mercedes part no. 9063530053) supplied with the HTV gear is required when the gear is installed on a W907 Sprinter.
3. Only below R&P is available for RD262.
- 100-023-01, MB SPR.W906 11x46-ring & pinion ratio 4.181 with bolts (12 required)
  - 100-179-01, MB SPR.W906 11x48-ring & pinion ratio 4.363 with bolts (12 required)
  - 100-078-01, MB SPR.W906 11x52-ring & pinion ratio 4.727 with bolts (12 required)
  - 100-180-01, MB SPR.W906 13x48-ring & pinion ratio 3.692 with bolts (12 required)
  - 100-082-01, MB SPR.W906 13x51-ring & pinion ratio 3.923 with bolts (12 required)

ARB Corporation Ltd • 42-44 Garden St Kilsyth VIC 3137 Australia  
ARB 4X4 Accessories USA • 4810 D St. NW #103 Auburn WA 98001 USA  
Australia & International Customer Service • +61 3 9761 6622  
North America Customer Service • Toll Free 866 293 9078  
[www.arb.com.au](http://www.arb.com.au) (AUS & Int) [www.arbusa.com](http://www.arbusa.com) (N. America)